

**SIRINDHORN CENTER  
FOR GEO-INFORMATICS (SCGI)**  
MASTER PROGRAM



**DOUBLE DEGREE IN  
MASTER OF SCIENCE  
IN GEO-INFORMATICS**  
M.SC. IN GEO-INFORMATICS

PROVIDING WORLD CLASS EDUCATION  
IN GEO-INFORMATICS AND TECHNOLOGY



# INTRODUCTION

Sirindhorn Center for Geo-informatics (SCGI) Master program stands designed to prepare personal capability for the demands of spatial solutions in the area of education under the collaboration of The State Key Laboratory of Information Engineering in Surveying, Mapping and Remote Sensing, Wuhan University (LIESMARS), Burapha University (BUU) and Geo-Informatics and Space Technology Development Agency (GISTDA), attached to the Ministry of Science and Technology of the Kingdom of Thailand. SCGI serves as the international institute for research and knowledge / technology transfer in space technology and Geo-informatics.

This Guidebook provides guidelines, policies and rules for the Master program. It also provides current information for the SCGI academic community.

## THE GUIDEBOOK HAS 5 PARTS :

### 1) THE SCGI MASTER PROGRAM

The SCGI Master Program section provides general information about the program including topics such as curriculum structure, requirements for admission, career path and learning objectives.

### 2) ACADEMIC AFFAIRS

The Academic Affairs section provides general information about the student's education, including topics such as registration for classes and requirements for graduation.

### 3) STUDENT AFFAIRS

The Student Affairs section provides current information about the day-to-day affairs and concerns of students. SCGI highly encourages students to get involved in activities at the universities and in the local community. This section also includes information on housing accommodations and lost items.

### 4) RULES, POLICIES AND HEARINGS

The Rules, Policies and Hearing section deals with disciplinary issues. This section also list student responsibilities and the consequences and penalties if they violate the student code.

### 5) FACILITIES ON CAMPUS

The last section provides information and guidelines for using the facilities at various campuses.

*Students should use the Guidebook as a guide  
to familiarize themselves with the program.*





# TABLE OF CONTENTS

## SCGI MASTER PROGRAM

Student Learning Outcome	7
Why SCGI?	8
Career Path	11
Curriculum Structure	11
Vision	11
Study Plan	12
Course Description	13
Admission Requirements	16
Faculty	16



## ACADEMIC AFFAIRS

Course Registration	23
Course Withdrawal	23
Tuition and Fees	24
Registration Errors	24
Late Registration and Add/Drop Period	24
Repeating Courses	24
Grading System	25
Grading under Burapha University	25
Grading under Wuhan University	25
Comparison of grading system	26
Leave of Absence	28
Maintaining Student Status	28
Master Thesis and Defense	28
Graduation	29
Graduation Registration	29
Commencement Ceremony	29
Probation	30
Change of Address	30
Transcripts and Other Documents	30
Recommendations	31

## STUDENT AFFAIRS

Student Services – Housing	32
On Campus Accommodation	
Vertical View	32
Accommodation around SCGI	33
Accommodation in Wuhan University	34
Health Services	36
Student Activities	36
Student Visa	37
Requirements for Student Visa in Thailand	37
Requirements for Student Visa in China	37

## RULES POLICIES AND HEARING

Dismissal policy	38
Academic Dishonesty	38
Fabrication	38
Falsification	38
Plagiarism	39
Policies on classroom	39
Examination Policies	40
Examination rules	41
Student Attire	42
Code of Student Conduct	42
Violation of Laws and of this Code	42
Prohibited Conduct	43
Disciplinary Procedures	44
Requests for Review of Decisions (Appeals)	45

## FACILITIES ON CAMPUS

Guideline for on-campus Facility usage	46
Space Renovation Park	48
Facilities in Wuhan University	51

## CAMPUS LOCATIONS

Sirindhorn Center for Geo –Informatics	52
Burapha University	52
Wuhan University	52

Contact Person	53
----------------	----





# SCGI

---

## MASTER PROGRAM

Sirindhorn Center for Geo-informatics (SCGI) Master program stands designed to prepare personal capability for the demands of spatial solutions in the area of education under the collaboration of The State Key Laboratory of Information Engineering in Surveying, Mapping and Remote Sensing, Wuhan University (LIESMARS), Burapha University (BUU) and Geo-Informatics and Space Technology Development Agency (GISTDA), attached to the Ministry of Science and Technology of the Kingdom of Thailand. SCGI serves as the international institute for research and knowledge/ technology transfer in space technology and geo-informatics.

### Student Learning Outcome

Objective of the Master of Science in Geo-informatics is to produce graduates with in-depth knowledge, ability and leadership to leverage experience in the field of in Geo-informatics and related technology such experience can be used to solve problems and plan for urban planning and industrial geography, physical geography, disaster prevention and mitigation, etc. By graduation, graduates of this course will have the following features :

- To understand the theory and technology of Geodesy, Modern photogrammetric, Remote sensing, Cartography, Geographic information systems, Global navigation satellite system (GNSS) and survey engineering.
- To use and operate a very wide variety of state-of-the-art technology, such as laser scanners, GNSS, etc.
- To apply their knowledge of these system to applications in various domains of geo-data handling.
- To analyze, synthesize and integrate to the new knowledge for developing and solve problems using geo-informatics.

# Why SCGI?

- **Wuhan University, the world class University**



Wuhan University is among the top 10 universities in China and well known for high-quality education. It has a long tradition of actively engaging in international exchange and cooperation. It has developed partnerships and collaborations with over 400 universities and research institutions in more than 70 countries and regions. Located along the bank of East Lake and at the foot of Luojia Mountain, Wuhan University is appreciated to be the most beautiful university in China, especially for its cherry blossom garden in the spring. The university is heavily wooded and green, with fragrant flowers everywhere year-round. The beautiful natural scenery, together with the ancient style buildings, forms a beautiful, peaceful and pleasant campus.

The State Key Laboratory of Information Engineering in Surveying, Mapping and Remote Sensing, (LIESMARS), Wuhan University, was founded in 1989, and the first state key laboratory in the field of surveying and mapping in China. In evaluations conducted by the Ministry of Science and Technology, LIESMARS was consecutively ranked "Excellent" in 2000, 2005, 2010, and 2015, and was presented with the Golden Bull Award in 2004. LIESMARS ranked first in the world in the surveying and mapping discipline and ranked first in China, and in geography, it is at the forefront.



- **Globally-recognized professors and Innovative research programs**

The Master program draws a wide range of renowned global experts. Our award-winning faculty are publishers in top tier journals and consistently invited to give presentations at the profile conferences. Professors from LIESMARS are their innovative research team in earth observation and navigation technologies at Wuhan University, led by three academicians, Prof. Li Deren, Prof. Liu Jingnan and Prof. Gong Jianya, won the National Science and Technology Progress Award in 2014. This visibility has allowed for research collaborations with departments and research institutions. The nationally and internationally esteemed faculty provide guidance, instruction and potential thesis research chairs to students in the master program. This program will challenge The Students academically through advanced academic experiences with globally recognized professors.



**Prof. Li Deren**



**Prof. Liu Jingnan**



**Prof. Gong Lianya**

- **Get a double specialization master's in a short time**

LIESMARS, Wuhan University, China and Burapha University, Thailand; Master of Science in Geo - informatics. Two of the leading academic institutions in their respective countries, are joining forces to offer students a new double degree programs in 2018. The new program will enable students from the two prestigious institutions to pursue complementary studies in Geo-informatics. With a double degree Master's program, students will divide study time into two periods, each belonging to one of the universities. The students will conduct a single graduation thesis, in collaboration with both universities, where the students will have advisors from the two organizations at the same time. This will also enable students to receive a Master of Science in Geo-informatics from Burapha University and Wuhan University.



## • Career opportunities in the prestige organizations

Wuhan University has cultivated professional talents in various occupations. GISTDA is a pioneer in developing applications and solutions for both public and private sectors. With their support, the program shall offer students the opportunities of an international internship / exchange program / study trips that will be a passport to pursue a successful career in top international organizations.



## • Broaden your international and inter-personal skills

Students will live on two different campuses and gain international experiences, therefore sharpening their international profile. An international study environment will help form an international network in China, ASEAN and beyond, which is necessary for their career.





# Career Path

Due to the broad spectrum of basic training and the wide variety of thematic and interdisciplinary areas of specialization that will be part of the curriculum, graduates can apply their knowledge and skills in several domains.

Graduate students who wish to pursue a career in academics can explore the opportunity in continuing the world class PhD program at LIESMARS, Wuhan University. The State Key Laboratory of Information Engineering in Surveying, Mapping and Remote Sensing (LIESMARS) produced PhDs graduates that then become tenured professors at universities around the world.



Graduate students may also pursue a career in the Geo-Information industry with companies such as ESRI, PLANET, Google, MapInfo, DJI, Digital Globe to name a few. As the graduate will have completed an international program, they will have access to a larger market share of companies including those in China. Specific areas of work include: positions in companies of geo-information (data analyzing, Big data, data processing, etc.), in companies in the fields of surveying engineering, photogrammetry, remote sensing and geo-visualization, geographic institutes and cartographic institutions in general, in areas of mass media and information graphics, computer system consulting and navigation system, and in planning departments. Graduate students may also choose to pursue a career with the government sector back in their home country. This program will provide them with a foundation to assess and make decisions based on geographic information in area of water management, urban planning, disaster management, etc.

# Curriculum Structure

## Vision

To provide twenty-first century education through a multi-dimension academic journey in Space Technology and Geo-informatics to students who will be future global leaders.

## Study Plan

The Master of Science in Geo-informatics (SCGI) offers a study plan with its own requirements. The duration of the course is for 2 years with 42 credits. Students study the 1<sup>st</sup> year at SCGI with 2 semesters; 1<sup>st</sup> semester between August – December and the 2<sup>nd</sup> semester between January to May. In the 2<sup>nd</sup> year students go to LIESMARS, Wuhan University in China and continue with another 2 semesters; 1<sup>st</sup> semester between September to January and 2<sup>nd</sup> semester in February to July.

**Core Course  
17 Credits**

**Elective  
Course  
13 Credits**

**Thesis  
12 Credits**

Year/ Semester	Course Name	Credit	Campus
1/1	Remote Sensing	3	SCGI
	Applications of Geographic information System	3	
	Global Navigation Satellite System	3	
	Elective Course	3	
1/2	Seminar for Graduate student I	1	SCGI
	Research and Environment Management Information System	3	
	Elective Course I	3	
	Elective Course II	3	
2/1	Comprehensive Chinese in daily life	2	WHU
	Outline of China	2	
	Thesis Proposal	4	
	Elective Course I	2	
	Elective Course II	2	
2/2	Thesis	8	WHU
Total		42	



# Course Description

## Faculty of Geo-informatics, SCGI and Burapha University

Require Courses		
87852061	Remote Sensing	3 (2-2-5)
Theories and principles of satellite image acquisition, characteristics of sensors and platforms for satellite data both optical and radar, remote data systems, preparation translucent interpretation, analysis and processing of satellite image data by computer, satellite data application in various fields, advances and trends in remote sensing technology.		
87852161	Applications of Geographic Information System	3 (2-2-5)
Spatial data form and structures, spatial data analysis, modelling, terrain model, spatial analysis, mathematical modelling, geo-statistical analysis, spatio - temporal modelling, geo-statistical analysis, GIS methods in social, economic and environment aspects, application of geographic information systems in various fields, future geographic information systems.		
87852261	Global Navigation Satellite System	3 (2-2-5)
Fundamentals of GNSS satellite navigation signals, GNSS Receiver Principles and Design, signal tracking, GNSS integrated navigation, information fusion, fault tolerance, aviation application, intelligent transportation applications, smartphone positioning and system integration using multi-drone.		
87852361	Research Methodology in Geo-informatics	3 (3-0-6)
Principles and processes of geographic research methodology, research techniques in conducting qualitative research and quantitative research using Geo-informatics, research design and planning, selection of research problems, principles of literature review, research methodology, principles of research writing, principles of writing research proposals, analysis of research results, spatial statistical analysis and other techniques, ethics researcher.		
87852461	Seminar in Geo-informatics I	1 (1-0-5)
Definition rationale, concepts and purpose of a seminar, components of a seminar, instructional management by seminar, planning the seminar, studying, researching, reviewing and analysing research papers and Geo-informatics-related articles, seminars on Geo-informatics topics, preparation of the seminar report, academic reference, principles of speaking and presentation in research seminar, criticism and discussion of research, the study of innovation in Geo-informatics.		
Elective Courses		
87852761	Resource and Environment Management Information System	3 (2-2-5)
Principles of resource management, nature of resource management system, characteristics of geographic data, physical principle of remote sensing, geographic information systems resource, remote data applications and geographic information systems for resource management, creating information technology management systems for resource planning.		
87852861	Database Management System	3 (3-0-6)
Data structure, database management, database management system components programs used for database administration and management, data file functional, collection, classification, retrieval, database design synthesis, processing access control of various types of data, define data standards, data connections and applications to manage spatial databases.		

Elective Courses		
87852961	Digital Image Analysis	3 (2-2-5)
Digital image data, Multispectral / Hyper Spectrum Image system, Radar System, advanced digital image processing techniques, improving image quality, principles of object - oriented image classification, vegetation index, multi-time data analysis, analysis and application of various types of remote sensing systems.		
87853061	Geographic Information Standard	3 (3-0-6)
Background of geographic information standards, national, regional and international geographic information standard development, national and international standards organizations, problems in implementing and applying geographic information standards for practical work, example of geographic information standards from various standard organizations, comparison of geographic information standards in International Standards Organization (ISO) and Open Geospatial Consortium (OGC).		
87853161	Land Use Management and Planning Techniques	3 (2-2-5)
Principles of land use planning, land use planning characteristics, framework, process and data system, socio-economic analysis of land use planning, land use planning for ASEAN Community.		
87853261	Management of Urban and Industrial Area	3 (2-2-5)
Theories, concepts and principals of urban planning, industrial zoning, laws of urban planning and industry, spatial data for urban planning, urban and industrial mapping.		
87853361	Advanced Physical Geography	3 (3-0-6)
Physical education, systematic analysis of natural phenomena, studies on climate, water, terrain, soil, rocks, minerals and organisms, analysis of global surface changes caused by various factors, study of the relationship between phenomena and human beings and their applications in various fields.		
87853461	Management of Natural Disaster and Climate Change	3 (2-2-5)
Definitions of natural disasters and climate change, analysis and creation of natural disaster and climate change model, disaster management and climate change, modelling and future projection to address natural disasters and climate change with Geo-informatics technology, application of Geo-informatics, disaster analysis and climate change.		
87853561	Environmental Impact Assessment	3 (3-0-6)
Principles and theories of environmental impact assessment (EIA), concepts, methods, issues and various forms and stages of EIA process, components of EIA report, regulations and laws of EIA, suitable methods and techniques for EIA, development of EIA topic, applications of geo-information technology in EIA.		

## LIESMARS, Wuhan University

Require Courses		
87852561	Comprehensive Chinese in Daily life	2 (2-0-4)
The scheme of Chinese phonetic, alphabet, master all the sounds, rhymes and tones of Mandarin Chinese, study emphasis on 795 first class Chinese characters, 993 first class new words and 102 basic grammatical points, the writing rules, master common words in fundamental level.		
87852661	Outline of China	2 (2-0-4)
System and comprehensive China with 14 key knowledge points about China, knowledge of Chinese territory, history, political, economy, society, culture, diplomacy, living, geography, law.		

## Elective Courses

87853661	Seminar in Geo-informatics II	1 (1-0-6)
Students develop critical thinking and academic writing competencies, formulate research questions, conduct literature review, write a proposal and engage in independent studies, research design skills, students to develop concrete quantitative and qualitative methods related to their own research topics.		
87853761	Integrated Navigation	2 (2-2-5)
Introduces the inertial navigation system (INS), multi-sensor integrated navigation techniques, the mathematical principle, the design and implementation of integrated navigation algorithm using GNSS/INS, the basic algorithm and system designs of integrated navigation.		
87853861	Generalized Adjustment	2 (2-2-5)
The basic and advanced knowledge of observation adjustment, hypothesis testing, blunder detection, kinematic modelling, variance-covariance component estimation, and their implementation, the application of above knowledge in your research projects.		
87853961	Principles of Photogrammetry	2 (2-2-5)
Principles of processing aerial and satellite frame and push broom based digital images; object extraction provides accurate metric details, data entry, digital mapping and GIS database, the principles of acquisition and processing of LIDAR data in the determination of DEMs and information extraction.		
87854061	Principles of Geodesy	2 (2-2-5)
Principles and foundation of geodesy, engineering and spatial geodesy, advanced physical geodesy, knowledge on geodesy theory and professional practical skills.		
87854161	Advanced Topics on Remote Sensing	2 (2-2-5)
Examination and implementation of sophisticated approaches for processing satellite digital images with emphasis on environmental and urban applications.		
87854261	Advanced Topics on GNSS	2 (2-2-5)
The scientific context of Global Navigation Satellite System (GNSS) technology, historical development, mathematical principles of GNSS, GNSS data processing, aspects of its applications in navigation, geosciences etc.		

## Thesis

87854361	Thesis proposals	4(0-0-12)
Research ethics, code of conduct of researcher, literature reviews, independent of research topics in Geo-informatics, objective of study, methodologies, geo-statistical analysis.		
87869961	Thesis	8(0-0-36)
Research ethics, code of conduct of researcher, research topic evaluation, literature reviews, research objectives, research methodologies, research proposal presentation, research conduction, result analysis and synthesis, discussion, full research report compilation.		



# Admission Requirements

- Fully filled Application form with photographs. Application form filled out or downloaded at <http://scgi.gistda.or.th> or <http://e-admission.buu.ac.th>.
- Applicants must be under the age of 45. If the applicant is over 45 years, he / she must have at least 3 years working experience in Geo-Informatics field
- Applicants must hold a bachelor degree in Geography, Geo-Informatics, Aerospace Engineering, Electrical Environmental Engineering, Mathematics, Physics, Informatics or Other Related Sciences.
- Certified copy of transcripts.
- Applicants must have a GPA of at least 2.75.
- Thai and foreign applicants with English certificates for TOEFL (iBT) overall score of 57 or above or IELTS score of 5.5 or above or BUU-GET 60 or above.
- Two letters of recommendation from persons who are familiar with the applicant's academic background and / or work experience, preferably an instructor(s) with academic rank for university or head of the unit in the work place of the applicant.
- A copy of a valid passport and / or Thai identification card.
- A copy of current residency document.
- A study plan, 800 words describing the applicants proposed plan on how she / he will apply the knowledge gained for the future.

## Faculty

### Member of Faculty under Burapha University



#### **Dr. Kitsanai Charoenjit**

##### **Director**

**Ph.D. (Geoscience Resources and environment),**

University Pierre et Marie Curie (UPMC), France, 2015

**M.Sc. (Appropriate Technology for Resource and Environment Development),**

Mahidol University, 2009

**B.Sc. (Environmental Science),** Suan Dusit University, 2006

E-mail : kitsanai@go.buu.ac.th



## Dr. Phattraporn Soyong

### Lecturer

**Ph.D. (Urban Environment Management),**

Asian Institute of Technology, 2014

**M.U.R.P. (Urban and Regional Planning),**

King Mongkut's Institute of Technology Ladkrabang, 1998

**B.Sc. (Geography),** Srinakharinwirot University, 1988

E-mail : phat\_jan@yahoo.com



## Dr. Anukul Burannapratheprat

### Assistant Professor

**D.Sc. (Coastal Oceanography),** Kyushu University, Japan, 2004

**Ph.D. (Geography),** University of Victoria, Canada, 2002

**M.Sc. (Marine Science),** Chulalongkorn University, 1994

**B.Sc. (Aquatic Science),** Burapha University, 1990

E-mail : anukul@buu.ac.th



## Dr. Noppakun Boongrapue

### Lecturer

**Ph.D. (Civil Engineering),** The University of Queensland, Australia, 2010

**M.Sc. (Civil Engineering),** Asian Institute of Technology, 2000

**B.Eng. (Civil Engineering),** Khon Kaen University, 1996

E-mail : noppakun@eng.buu.ac.th



## Dr. Parin Lopittayakorn

### Lecturer

**Ph.D. (Environmental Science),** Kasetsart University, 2012

**M.Sc. (Oceanography Physics),** Chulalongkorn University, 1999

**B.Sc. (Physics),** Burapha University, 1996

E-mail : parinl@buu.ac.th



## Dr. Rungatith Buchaintra

### Lecturer

**Ph.D. (Organization Development and Human Capability Management),**

Burapha University, 2016

**M.Sc. (Geographic Technology),** Burapha University, 2007

**B.Sc. (Map and Geographical Technology),** Burapha University, 2004

E-mail : [rungatith@go.buu.ac.th](mailto:rungatith@go.buu.ac.th)



## Dr. Narong Pleerux

### Assistant Professor

**Ph.D. (Geoinformatics),** University of Salzburg, Austria, 2009

**M.Sc. (Environment Science),** Naresuan University, 2006

**B.A. (Business Administration),** Phranakhon Si Ayutthaya Rajabhat University, 2003

E-mail : [narong\\_p@buu.ac.th](mailto:narong_p@buu.ac.th)



## Dr. Narumon Intarawichian

### Lecturer

**Ph.D. (Geoinformatics),** Suranaree University of Technology, 2009

**M.Sc. (Geography),** Chulalongkorn University, 1998

**B.Sc. (Geography),** Burapha University, 1995

E-mail : [narumoni@buu.ac.th](mailto:narumoni@buu.ac.th)



## Dr. Pattama Phodee

### Lecturer

**Ph.D. (Exploration Engineering),** Chulalongkorn University, 2014

**M.Sc. (Geomatics Technology),** Burapha University, 2006

**B.A. (Geography),** Burapha University, 2003

E-mail : [pattamap@go.buu.ac.th](mailto:pattamap@go.buu.ac.th)



## Member of Faculty under Wuhan University



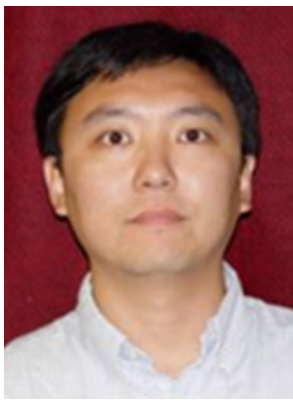
### Dr. John Trinder Emeritus Professor

**Ph.D.**, University of New South Wales, Australia, 1971

**M.Sc. Photo.Eng.**, ITC, Netherlands, 1965

**B.Surv**, Hons.(II/I) University of New South Wales, Australia, 1963

E-mail : j.trinder@unsw.edu.au



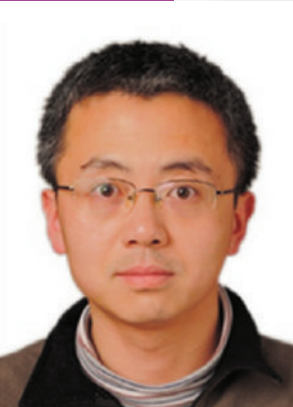
### Dr. Le Wang Professor

**Ph.D. (Environmental Science)**, University of California, U.S.A, 2003

**M.S. (Remote Sensing)**, Peking University, Beijing, China, 1998

**B.E. (Remote Sensing)**, Wuhan Technical University of Surveying and Mapping, China, 1996

E-mail : lewang@buffalo.edu

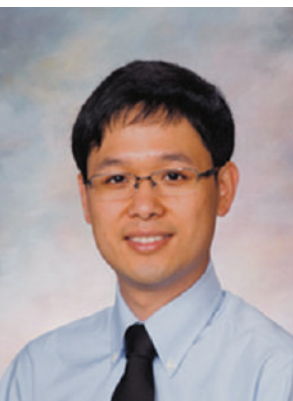


### Dr. Xiaoji Niu Professor

**Ph.D. (Precision Instruments)**, Tsinghua University, China, 2002

**B.Sc. (Precision Instruments)**, Tsinghua University, China, 1997

E-mail : xjniu@whu.edu.cn



### Dr. Junbo Shi Lecturer

**Ph.D. (Geomatics Engineering)**, University of Calgary, Canada, 2013

**B.Sc (Geomatics Engineering)**, Wuhan University, China, 2005

Email: jbshi@sgg.whu.edu.cn



## **Dr. Shi Chuang** **Professor**

**Ph.D. (Geodesy and Surveying Engineering),**

Wuhan Technical University of Surveying and Mapping, China, 1999

**M.Sc. (Geodesy and Surveying Engineering),**

Wuhan Technical University of Surveying and Mapping, China, 1995

**B.Sc. (Geodesy),** Wuhan Technical University of Surveying and Mapping, China, 1991

E-mail : shi@whu.edu.cn



## **Dr. Jiming Guo** **Professor**

**Ph.D. (Institute of Communication Engineering),**

Wuhan Technical University of Surveying and Mapping, China, 2001

**M.Sc. (Geodesy and Surveying Engineering),**

Wuhan Technical University of Surveying and Mapping, China, 1989

**B.Sc. (Geodesy),** Wuhan Technical University of Surveying and Mapping, China, 1985

E-mail : jmguo@sgg.whu.edu.cn : jmguo@sgg.whu.edu.cn

## **Member of special instructor under GISTDA**



## **Dr. Damrongrit Niammuad** **Acting Deputy Executive Director**

**Ph.D. (Industrial Business Administration),**

King Mongkut's Institute of Technology Ladkrabang, 2014

**M.Sc. in Engineering (Radio and Space Science),**

Chalmers University of Technology, Sweden, 2003

**B.Eng. in Electrical Engineering (Telecommunications and Electronics),**

Thammasat University, 2002

E-mail: damrongrit@gistda.or.th



## **Dr. Tanita Suepa** **Head of Instructional Media and** **Curriculum Development Division**

**Ph.D. (Remote Sensing and Cartography),** Michigan State University, U.S.A, 2013

**M.U.R.P. (Urban and Regional Planning),** Chulalongkorn University, 1998

**B.A. (Geography),** Chulalongkorn University, 1994

E-mail: tanita@gistda.or.th





### **Dr. Chanika Sukawattanaavit** **Geo-Informatics officer**

**Ph.D. (Space Technology Applications)**, Beihang University, China, 2016

**M.Sc. (Human Settlement Planning Geography)**, Kasetsart University, 2003

**B.A. (Geography)**, Prince of Songkla University, 2000

E-mail : chanika@gistda.or.th



### **Dr. Pakorn Petchprayoon** **Head of Geo-Informatics Application** **in Economic development division**

**Ph.D. (Remote Sensing & Climate Study)**, University of Colorado at Boulder, U.S.A, 2015

**M.A. (Remote Sensing & Hydrology)**, University of Colorado at Boulder, U.S.A, 2008

**M.Sc. (Information Technology Management)**, Mahidol University, 2011

**B.Sc. (Geography)**, Burapha University 1994

E-mail: pakorn@gistda.or.th



### **Dr. Sitthisak Moukomla** **Geo-Informatics officer**

**Ph.D. (Geography)**, University of Colorado, U.S.A, 2015

**M.Sc. (Forest Ecology)**, Kasetsart University, 2002

**B.Sc. (Geography)**, Thaksin University, 1999

E-mail: sitthisak@gistda.or.th



### **Dr. Tippawan Wanwiwake** **Researcher**

**Ph.D. (Satellite Engineering)**, University of Surrey, U.K, 2012

**M.Sc. (Satellite Engineering)**, University of Surrey, U.K, 2006

**B.A. (Electrical and Computer Engineering)**,

Queensland University of Technology, Australia, 2001

E-mail : tippawan.w@gistda.or.th



## **Dr. Siam Lawawirojwong** **Researcher**

**Ph.D. (Remote Sensing and GIS)**, Michigan State University, U.S.A, 2013

**M.Sc. (Information Management on Environments and Resources)**,  
Mahidol University, 2002

**B.Sc. (Environmental Science and Technology)**, Mahidol University, 1999

E-mail : [siam@gistda.or.th](mailto:siam@gistda.or.th)



## **Dr. Panu Srestasathien** **Researcher**

**Ph.D. (Geodetic sciences)**, The Ohio state university, U.S.A, 2011

**M.Sc. (Geodetic sciences)**, The Ohio state university, U.S.A, 2008

**B.E. (Elective Engineering)**, Chulalongkorn University, 2004

E-mail : [panu@gistda.or.th](mailto:panu@gistda.or.th)



## **Dr. Supachai Skawsang** **Geo-Informatics officer**

**Ph.D. (Remote Sensing and GIS)**, Asian Institute of Technology

**M.Sc. (Appropriate Technology for Resources and Environment Development)**,  
Mahidol University, 2003

**B.Sc. (Horticulture)**, King Mongkut's Institute of Technology Ladkrabang, 1997

E-mail : [supachai@gistda.or.th](mailto:supachai@gistda.or.th)



# ACADEMIC AFFAIRS

The Academic Affairs section provides general information about the student's education, including topics such as registration for classes and requirements for graduation.

## Course Registration



New students register for orientation by simply contacting the admissions office in SCGI building there after the academic staff will process the request on to the system by logging on to <http://smartreg.buu.ac.th>.

Students can then register for the courses on the registration date. The registration dates can be found on the Academic Calendar, which is available on the website.

On the registration date, students can quickly access the registration process by simply logging on to <http://reg.buu.ac.th> Registration will be complete with payment of tuition fees.

In September, students would then have to re-register according to Wuhan University policy and submit all the necessary documents when asked for through their system <http://yjs.whu.edu.cn/ssfw/login.jsp>. For more information regarding this, students can contact the Academic office directly at SCGI building or graduate affairs office in Wuhan University.

## Course Withdrawal

Students are personally responsible for dropping a course in which they no longer wish to be enrolled. Students may withdraw from a course during the add /drop period at the beginning of the semester. The withdrawal period for each semester is published in the Academic Calendar which can be downloaded from the website.

Students officially withdrawing after the add / drop period will not receive a refund and will receive a W grade for the class. Permission to withdraw from a class must be obtained from the instructor. The grade of W will not be used in calculating grade point averages but W grades will also affect any dismissal decision.

Students can contact the Academic office directly at SCGI building or graduate affairs office in Wuhan University for more information regarding this.

## Tuition and Fees

**Approximate fees are as follows :**

Tuition Fee	Resident	Non-Resident
M.Sc. Geo-Informatics		
1 <sup>st</sup> year @ Burapha University	THB 200,000	THB 290,000
2 <sup>nd</sup> year @ Wuhan University	RMB 35,000	RMB 35,000

**Remark : These costs does not include the following expenses :**

Additional Costs	
Admission @ Burapha University	THB 2,000
Application @ Wuhan University	RMB 800
Graduation	THB 1,700
Insurance (Non-Resident) @ Burapha University	THB 3,500
Insurance @ Wuhan University	RMB 600
English Proficiency Test	THB 8,000
Medical Test @ Wuhan University	RMB 300
Accommodations Cost	Varied

**Remark : All rates mentioned above are approximately calculated and are subject to change without prior notice depending on the currency fluctuation.**

## Registration Errors

Errors in registration to be corrected within the first week of instruction during the semester.

## Late Registration and Add/Drop Period

Students who do not register during the registration period can register during the late registration and add / drop periods. The add/drop period consists of 2-3 working days. Students can access the add / drop form by contacting the Academic office directly at SCGI building or graduate affairs office in Wuhan University for more information regarding this.

## Repeating Courses

Students may repeat or re-grade a course when they are not satisfied with the result, and the latest grade will be used to calculate the Cumulative GPA. However, the previous grade(s) will still appear on the transcript.



Students who withdraw (W) or fail a course with a C, D, F or U grade should retake the course if it is a requirement of the major's curriculum. Please note that students can only register a course for a maximum of three times. If by the third time the student still cannot reach the minimum passing grade for that course, then the dismissal policy will be strictly imposed.

## Grading System

Evaluation of a student's achievement in a course are recorded by letter grades. However, for the grading system for both the universities Burapha and Wuhan are a little different. The following table shows the details of grading system within the each university and a combination of what is used.

### Grading under Burapha University

GRADE	ACHIEVEMENT	FINAL SCORE (% RANGE)	GPA
A	Excellent	90-100	4.0
B+	Very Good	85-89	3.5
B	Good	80-84	3.0
C+	Pretty Good	75-79	2.5
C	Fair	70-74	2.0
D+	Weak	65-69	1.5
D	Very Weak	60-64	1.0
F	Fail	Less than 60	0.0

### Grading under Wuhan University

GRADE	ACHIEVEMENT	FINAL SCORE (% RANGE)	GPA
A +	Perfection	96-100	4.3
A	Excellent	90-95	4.0
A -	Very Good	85-89	3.7
B+	Good	80-84	3.3
B	Pretty Good	75-79	3.0
B -	Very Fair	70-74	2.7
C+	Fair	67-69	2.3
C	Weak	63-66	2.0
C -	Very Weak	60-62	1.7
D	Fail	Less than 60	1.0

## Comparison of grading system

Wuhan University		Burapha University	
GRADE	GPA	GRADE	GPA
A+	4.3	A	4.0
A	4.0		
A-	3.7		
B+	3.3	B+	3.5
B	3.0	B	3.0
B-	2.7	C+	2.5
C+	2.3		
C	2.0	C	2.0
C-	1.7		
D	1.0		

### Other letter grades, without credit points, are assigned for course work taken as follows:

I	Incomplete (awaiting evaluation)
S	Satisfactory (Pass the criteria)
U	Unsatisfactory (Fail to meet the criteria)
AU	Audit (study of a course which leads to no credit being awarded)
W	Withdrawal

### An F will be given in the following situations :

- Students who fail a major examination or project.
- Students who are absent on the exam date without permission from the Faculty members.
- Students who are not allowed to take the examination because they have failed to attend 80 percent of the total class time.
- Students who violate the rules regarding examinations, for example, are late for the exam or engage in cheating, collusion etc.
- Students who receive an "I" grade and fail to take the exam or complete a project during the next trimester (except those students who have permission to take leave of absence).



**An AU will be given for those courses in which students receive no credit; however, students must attend at least 80 percent of the classes.**

**An I will be given in the following situations :**

- Students who do not take the exam or do not hand in their reports on time due to health problems but submit a medical certificate. However, the Faculty Member will make a final decision.
- Students who are not allowed to take the exam because they attend less than 80% of the classes due to health problems and submit a medical certificate. However, the Faculty Member will make a final decision.
- Students who are unable to take the exam or hand in a report due to circumstances beyond their control. Again, the Faculty Member will make a final decision.
- Please note that: The 'I' grade will automatically change to an F or a U grade at the end of the following semester if the lecturer in charge has not changed the 'I' by that time. If the grade awarded is an F or a U, then the student must register for that course again in the following semester.



**A W will be given in the following situations:**

- Students are allowed to withdraw from courses after the add / drop period; However, they will not receive a refund.
- Students allowed taking a leave of absence.
- Students who are suspended.
- Please note that: The 'I' grade can be changed to a W grade if the student was away due to health problems and submit a medical certificate at the end of the following semester. However, the Faculty Member will make a final decision.

**The Thesis advisory committee will give an S or U in Thesis Dissertation.**

## Leave of Absence

Students can take a leave of absence for a maximum of one year. In order to maintain their student status, they are allowed to request a leave in the following situations:

- Having health problems, which need to take more than 20 percent of class hours to recover or to be treated properly. A medical certificate is required in this situation.
- Students are allowed to ask for a leave for personal reasons only once a term.
- Please note that all requests need to be approved by the Academic committee.

Students can access the leave of absence form by contacting the office at SCGI Building. Students must explain the reasons and identify the semester in which they will return to study. Please be informed that the period of taking a leave of absence is also counted towards the total study time.

## Maintaining Student Status

If students are taking a thesis in their last semester, and the subjects' grades have not yet been published at the end of the semester and the students have no more courses to take, they need to maintain their student status by contacting the academic office and completing the requested form.

Please note that students have to maintain their student status if they registered for thesis or Senior Project or Independent Study or Internship in their last semester of study, but the grade could not be submitted to the office.

## Master Thesis and Defense

A written thesis must be submitted and be defended in a colloquium.

The Master Thesis will be supervised by one of the advisors from the advisory team from Wuhan University and a co-supervisor from Burapha University.

- The Thesis proposal must be submitted at least half a year before the defense. A committee to review this proposal will consist of four (4) members from the faculty and one external member. The Thesis committee will determine if the subject is appropriate and whether the topic is relevant to the field of study.
- A status report must be submitted to the supervisor every three months after thesis work begins. The status report must provide a summary of the work that has already been done and also must give an outlook on the anticipated outcome together with a schedule for the time until submission.
- The Master Thesis must be defended in a colloquium at Wuhan University.



## Graduation

In order to graduate, the students must complete 42 credits based on the program's requirements. To graduate, students must earn a minimum Cumulative GPA of 3.00. Students must pass the English Proficiency test and must pass the Thesis defense and have obtained an acceptance of publication in a journal or academic publication or have presented it at a conference, which has the proceedings. Students are required to request for their graduation by contacting the admission office at SCGI building. A staff will give the students through an online system and to check the printed course record provided by the Registrar Office before registering for their last semester.



## Graduation Registration

After the students have already submitted the checked course record to the Registrar Office, they will have to wait until all the grades have been published in the system. If their thesis grade has not yet been published at the end of the semester and they have no more courses to take, they must maintain their student status by contacting the academic office.

## Commencement Ceremony

At Burapha University, His Majesty the King or a member of the Royal Family, Acting on His Majesty's Behalf, will preside over the annual ceremony. In order to attend the ceremony, the prospective graduate must register for the ceremony at the proper time (generally after all the grades have been published in the system), and have successfully passed all the courses, including thesis. All students must be dressed in the appropriate graduation gown. At Wuhan University, in order to attend the ceremony, the prospective graduate have successfully passed all the courses including their Thesis.

## Probation

**All students are automatically classified under the following:**

1. Regular normal status students, or
2. Students on probation.

The classification will start at the end of the student's second semester of the first academic year, and will continue until graduation. The classifications of a student's status are as follows:

STUDENTS STATUS	CRITERIA
Regular normal status	Students with a Cumulative GPA of 3.00 or higher
Probation	Students with a Cumulative GPA of 2.75 or higher but less than 2.99

Students will be removed from probation when the student achieves a Cumulative GPA of 3.00 or higher. Failure to achieve the minimum Cumulative GPA standard during the designated probation period will result in dismissal.

## Change of Address

Students changing their residences and / or contact telephone numbers should fill in a Change of Address form at the academic office. Students are responsible for keeping their addresses and contact numbers current.

## Transcripts and Other Documents

The Registrar Office issues the following academic documents when requested:

- Transcript or Grade Report
- Certification of Student Status

Each document takes 3 working days and there is a fee for each type of document; plus a postage charge if the document is mailed. The students have to fill in the form in person and then follow the process as required. If students cannot submit the form in person, they may authorize a representative to do so on their behalf by attaching a completed letter of authorization form, available at the academic office. Any request for a special letter or document should be addressed to the Academic Committee submitted to the admission office at SCGI building. The request should be specific about all the information, the purpose of the request, and it should have full contact details of the student.



## Recommendations

Students requiring a recommendation letter for employment or further studies should contact their lecturers. Most lecturers are willing to write a recommendation letter, but it is not an obligation. When making the request, students should provide the lecturer with a copy of their transcript and a short letter that requests a recommendation, stating the purpose of the recommendation and indicating classes or interactions that the student had with the lecturer.

## Student ID Cards

When first entering the program, students will apply for and receive a student ID card. Students must have their ID cards with them at all times while on campus and must show their ID cards when requested by a university official. Students are also required to bring their ID cards to mid-term and final examinations.

According to Wuhan University policy, a campus card is issued for students. There are many uses of the Campus Card:

### International Students Dormitory Entry Card

In order to enter and exit their campus residence, all students who have fully completed the dormitory registration process are required to carry their campus card on their person at all time

### On-Campus Payment / Bus Card

The campus card can be used to make purchase in any of the school canteens and even the on – campus supermarket. It can also be used to travel around the campus on the bus provided. For your convenience, we suggest that you link your campus card and bank account together; this can be done at the University's Financial Affairs Department. Upon doing so we also suggest that you change the password of your campus card account in the interest of your safety.

### Library Card

In order to set up your library card account, you must first report to room 104 in the School of International Education and present the appropriate documentation (campus card, student booklet, passport etc.) to prove your status as student of Wuhan University. Having done this, you may now make your way to the university library with the aforementioned documentation to complete the library card registration process.

## Lost Student ID Cards

Students who lose their ID cards must request a replacement ID cards from the Admissions Office. The request takes three working days to process. At Wuhan University, you must bring your passport and student booklet to successfully apply for a new campus card.

# Student Affairs

The Student Affairs section provides current information about the day-to-day affairs and concerns of students. SCGI highly encourages students to get involved in activities at the universities and in the local community. This section also includes information on housing accommodations and lost items

## Student Services – Housing

Although commuting from parts of Bangkok to SCGI Campus is not difficult, many students decide to live either on or close to the campus. This allows them to have more time to focus on their studies as well as participate in extra-curricular activities.

Students have access to various parts of the province; all the residences are located very near to some of the most famous tourist places like Pattaya City and the beautiful local beach in Bang Sean. Commuting from the campus to these attractive places takes less than 30 minutes. There are also other interesting places around Laem Chabang area; Parks, Cinema halls, local Markets, Restaurants, Malls and Convenience stores are all located around the vicinity. Other available facilities like Banks, Hospitals and Cafes are also located nearby.

Similarly, at Wuhan University campus, commuting is not difficult. Situated in the heart of central China, Wuhan City strategically forms an intrinsic part in the transportation network across the country hence is very easily accessible for other cities being it by train, by air or by bus.

In and around the Campus in Wuhan, there are similar facilities like Banks, Convenience stores, restaurants, Cafes, hospitals and parks.

## On Campus Accommodation – Vertical View



Vertical view is a comfortable two-story complex consisting 23 rooms (singles and shared). A private bathroom is provided in each room and the room is fully furnished and with air-conditioning. Students have access to a lounge and kitchen area and the internet. The cost for renting is 4,500 baht per month including electricity or water supply.



## Accommodation around SCGI

### The Rich Residence



The rich residence offers a modern luxurious accommodation, with private bathroom in each room. The apartment is just 10 minutes by bicycle. The cost is 7,000 – 8,000 baht per month, excluding electricity and water supply.

For those who are interested please contact the management of the building through email: [therichresidence.lcb@gmail.com](mailto:therichresidence.lcb@gmail.com) or through phone no.: +66 (0) 92-334-6699.

### D Residence



D Residence is located near the back gate of SCGI campus.

It offers a modern room with a private bathroom. The room is well equipped with air-conditioning. The cost is 5,000– 8,000 baht per month, excluding electricity and water supply.

For those who are interested please contact the management of the building through phone nos.: +66 (0) 80-915-1965 or +66 (0) 61-724-6665.

### Soontaree House



Soontaree House located on Sukhumvit road near SCGI Campus. It is a comfortable apartment with private bathroom in each room and the room is fully furnished and with air-conditioning.

The cost for renting is 6,000 – 8,000 baht per month not including electricity or water. For those who are interested please contact the management of the building through

email: [soontareehouse@gmail.com](mailto:soontareehouse@gmail.com) or via phone nos.: +66 (0) 99-226-9692 or +66 (0) 98-429-2254.

You can also visit their website

<http://www.soontareehouse.com> for more information.

## Accommodation in Wuhan University

The following options are available for you, should you be staying on campus.

Campus	option		By school year (yuan per year)	By Semester (yuan per year)	Short-term non-diploma student (yuan per year)	By month (yuan per year)	By day (yuan per year)
Campus of Medicine	No.6 Building	Single room	14000	7500		1600	70
		Large single room	16000	8500		1800	80
		Suite	19000	10000		2000	90
	No. 7/8/9/ Building (twin room)		9600	5000		1200	50
	No.10 Building (twin room)		7200	4000		800	40
	Ying Bin Building (twin room)		9600	5000		1200	50
Main Campus	No.1 Building (Four bedrooms with a living room, one person per room)		11000	6000	5000	1500	60
	No.2 Building (Single room)		14000	7500	6000	1600	70
	No.3 Building	Single room Without Balcony	14000	7500	6000	1600	70
		Single room With Balcony	16000	8500	7000	1800	80
		Large suite with balcony	28000	15000	12000	3000	120
	No.4 Building (Two rooms with a living room, one person per room)		*Remark. Only for scholarship students				
	No.5-6 Building (Two rooms with a living room, two person per room)						





\*\*Remark. Refund is only available for those who live less than one month and refund is 80% of the full payment. Electricity fee is not included in the above. Bedclothes need to be prepared in advance or buy at nearby market. The rooms well decorated with furniture, air conditioning, shower and toilet, etc. Any damages or losses in the apartments during your stay should be paid for accordingly. Information posted on our website when there are changes on housing and fees <http://admission.whu.edu.cn/index.html>. The accommodation fee at Campus of Medicine is only applicable for new students and those current students who apply for moving back from outside. The above prices are for reference only; we take no responsibility for any change in prices by the office.





## Health Services

While at SCGI, students can receive health care services. Full-time Students can seek medical care at on-campus clinic for cold and other common illnesses. However, for other serious physical injuries there are a few hospitals situated near the campus. Samitivej Hospital and Phyathai Hospital situated in Si Racha or at Vibharam hospital situated near SCGI. Cost occurred are non-inclusive in the tuition fee and cannot be reimbursed from the program.

At Wuhan, the on-campus clinic provides medical examination and prescription for cold and other common illnesses. The medical insurance will cover most of the charges of being in hospitals for serious illness. The cost incurred would be around 1 RMB for consultation and 6 RMB for registration and medical certificate. Off-campus Wuhan University hospitals include ZhongNan Hospital, Kouchiang Hospital and Renmin Hospital.

Additionally, Additionally, Students seeking counseling services can contact the academic office at SCGI for consultation on various concerns or can email your concerns to [scgi@gistda.or.th](mailto:scgi@gistda.or.th).



## Student Activities

A large part of the education experience can be found outside the classroom where students interact with others and are actively involved not only at the college, but also in the greater community. By being involved, you are helping yourself and helping others. Therefore, SCGI program encourages all students to participate in all activities.





## Student Visa

### Requirements for Student Visa in Thailand

In order to study in Thailand, international students are required to obtain an Education visa(ED visa). International students need the following to apply for an ED visa in order to study in Thailand:

- Completed application form
- Valid passport with a minimum validity of at least 1.5 year
- One current passport size photograph
- Proof of sufficient financial means to support themselves throughout the stay
- Printed letter of Admission from a school / university in Thailand

The ED visa is valid only for 3 months from the day of its issue and within this period of time, international students who want to study in Thailand need to pay their tuition fees for the current semester. There is a possibility for international students to ask for an extension in order to cover the full time study period, if they provide their registration letter.



### Requirements for Student Visa in China

According to the Chinese government regulations, students need to apply for a Category X visa to study in china. Visa is required for those who intend to stay in China for more than six months. For more information about the required documents to make a successful X visa application, please consult the Chinese Embassy and follow its requirement:

- Valid Passport
- Wuhan University Admissions Notice
- Passport photocopies (2)
- Passport size photos (12 copies or more)
- Proof of Residency
- Physical Examination report and blood test result (originals stamped and signed by a physician or hospital). All in English.

# Rules Policies and Hearing

The Rules, Policies and Hearing section deals with disciplinary issues. This section also list student responsibilities and the consequences and penalties if they violate the student code.

## Dismissal policy

All SCGI students have to comply with the University Regulations. Dismiss students according to the following situations:

After classification, the student has a Cumulative GPA of less than 2.5.

- The student has enrolled in the same course for the third time, and has still not passed the course.
- The student has been studying twice the time specified in the curriculum, which includes leave of absence if taken.
- The student has breached the University's or joint institute regulations on students' discipline.
- The student has difficulty studying or otherwise due to a mental disorder. In this case, the university will appoint a committee to deliberate on the situation and make recommendations for the Academic committee to approve.
- The student is caught cheating during an exam and the Academic committee decides to dismiss the student.
- Death.

## Academic Dishonesty

Academic dishonesty is prohibited at SCGI. It is a serious offense because it diminishes the quality of scholarship and makes accurate evaluation of student progress impossible. Academic dishonesty includes, but is not limited to, the following categories.

### Fabrication

Fabricating is the invention or creation of data, research results, information or procedures.

### Falsification

Falsification means altering or falsifying information, as in the following:

- Changing grade reports or other academic records.
- Altering the record of experimental procedures, data or their results.
- Altering the record of or reporting false information about internship, clinical or practicum experiences.
- Forging someone's signature or identification on an academic record.
- Altering a returned examination paper in order to claim that the examination was graded erroneously.
- Falsely citing a source of information.
- Multiple submissions of substantial portions of the same academic work, including oral reports, for credit more than once without prior authorization by the lecturer involved.



## Plagiarism

Plagiarism is taking someone else's words or ideas as one's own in any academic exercise. It includes the following:

- Submitting as one's own paper a paper written by another person or by a commercial ghost writing service.
- Exactly reproducing someone else's work without identifying the words with quotation marks or by appropriate indentation or without citing the quotation or referencing.
- Substantially copying prior work.
- Paraphrasing or summarizing someone else's work without acknowledging the source with a citation or reference.
- Using facts, data, graphs, charts or other information without acknowledging the source with a citation or reference.
- Cutting and pasting information from electronic sources without acknowledging the source with a citation or reference.



## Policies on classroom

Students are required to wear proper attire while at SCGI, especially when in class and during examinations. Students are required to have at least 80 percent class attendance to be eligible to take the final examination. As a courtesy, students need to let the instructor know beforehand when they have a valid reason to leave class early or come to class late. Permission from the instructor is required to leave a device on in an emergency. Students are not allowed to bring food or drinks in the classrooms. Smoking is prohibited everywhere on campus.

## Examination Policies

- Students must present their ID cards every time they take examinations.
- Students must wear proper attire according to SCGI's regulations; those wearing jeans, short skirts, sandals and / or shoes with no back strap will not be allowed to enter the examination room.
- Students are prohibited from using another person as a substitute in taking an examination and / or acting as a substitute for another student at the examination.
- Only students on the official registration list are eligible to take examinations.
- Students are allowed to keep necessary examination accessories near them, such as pens, pencils and valuables.
- Students must not keep mobile phones, communication devices and / or electronic recorders of any type on their person during the examination.
- Students must not bring textbooks, notes, documents, calculators or any objects that contain formulas, texts or symbols related to the examination into the examination room unless authorized and clearly indicated by the lecturer. When dictionaries or other reference materials are allowed during the examination, proctor will check them. Electronic dictionaries are not allowed.
- Students are not allowed to talk during the examination. If there are questions, they should be directed to the lecturer or to the proctor.
- Students are not allowed to copy, take pictures of, tear or take the examination paper, answer book and / or answer sheet out of the examination room.
- Students are not allowed to send any information via email or other electronic devices during the examination.
- Students who are suspected of cheating, caught cheating or are involved in any cheating must be subjected to disciplinary procedures and their penalties.
- Students who fail to take an examination on the date and time scheduled by SCGI will be considered absent from the examination and automatically receive an F, except for those students who receive approval to take the make - up examination or receive prior permission before the examination date; such students will be given of "I" until the "I" is changed to letter grade.

**EXAMINATION  
ON QUIET**



## Examination rules

Students are not allowed to engage in any of the following actions:

- Using or attempting to use books, notes, study aids, calculators, computers, papers, electronic devices, electronic files, electronic means or any other documents without prior authorization by the instructor during the examination.
- Possessing written notes on body parts, paper or other objects during examination.
- Sending a substitute to take an examination or acting as a substitute for another student at any examination.
- Plagiarizing assigned work or copying others' works.
- Having a cell phone or any other communication device on one's person during the examination.
- Having anything other than writing instruments, examination papers and answer sheets on the desk during the examination.
- Sending an examination paper and/or answer sheet via email or any other electronic media during the examination.
- Taking the examination and/or answer sheet out of the examination room.
- Unauthorized communication during the examination.

Signing the examination attendance sheet certifies that you have read the above information and agree to all the rules. Therefore, you consent to accept any punishment according to the SCGI Examination Rules. The decision to investigate any violations is at the discretion of the Working Academic committee.

Penalty for cheating includes but is not limited to:

- Grade F for the subject
- Grade F for all subjects registered in the semester
- Academic suspension for the next regular semester
- Dismissal

All essays, projects, thesis and thematic papers must be the student's own original work. Plagiarism could lead to the aforementioned punishments.

## Student Attire

Students are required to wear proper attire while at SCGI and LIESMARS.



Male Students	Female Students
<ul style="list-style-type: none"><li>• ID card</li><li>• Tucked-in shirts</li><li>• Leather or suede belt</li><li>• Dark blue, navy blue, black, brown, or dark grey dress pants (No Jeans)</li><li>• Plain black or dark colored shoes, or plain sport shoes</li><li>• Socks which cover the ankle</li></ul>	<ul style="list-style-type: none"><li>• ID card</li><li>• Plain blouse<ul style="list-style-type: none"><li>- Length should be enough to be completely tucked in the skirt</li><li>- Must not be tight</li></ul></li><li>• Leather or suede belt</li><li>• Knee-length, plain dark blue or navy blue or black skirt</li><li>• Black or dark colored shoes which cover the heel or with a back strap (No Flip-flops or Sandals).</li></ul>

## Code of Student Conduct

The SCGI Code of Student Conduct contains SCGI's policy regarding the discipline of its students. It is meant to protect and preserve the educational environment on various campuses. The committee reserves the right to take any necessary action to protect the safety and well-being of the campus community.

## Violation of Laws and of this Code

Students may be accountable to both civil authorities and to the program for any illegal activity, such as assault, theft, possession of illegal substances, disorderly conduct and so forth. The committee will refer matters to the proper civil authorities.



## Prohibited Conduct

Students must regularly and strictly observe the regulations of the Code of Conduct. Any non-ethical conduct, which is considered a disciplinary offense, is subject to the actions stipulated in these regulations.

- Students are expected to maintain the unity, peace, reputation and honor of the program.
- Students must conduct themselves in a manner, which does not cause disrepute or damage to oneself, other persons or the program.
- Students must dress appropriately, in accordance with the regulations and notifications of the university.
- Students shall not drink alcohol or intoxicants on the university campuses.
- Students must not smoke on the university campus except in the designated smoking area.
- Students must not park in the prohibited parking areas on campus.
- Students must not cause controversy or engage in the physical assault on others.
- Students must not destroy the property of the college and university.
- Students who engage in the following behavior will be subject to serious disciplinary action :
  - Gambling or engaging in any activity that promotes gambling.
  - Consuming or having in one's possession narcotics or illegal drugs for either personal use or distribution.
  - Theft, fraud, embezzlement or exerting undue coercion in financial transactions.
  - Possessing or carrying firearms or other dangerous materials on campus, which may cause danger to the lives and property of others.
  - Sexual activity that violates public sensibilities or sexual assault.
  - Physical assault on others that may result in serious injury or death.
  - Committing any criminal offence that may result in imprisonment.
  - Intentionally cheating on examinations or attempting to do so.
  - Producing, publicizing or having on one's person any unwarranted material which may cause damage to the reputation of the university or to others
  - Forging the signatures of others and forging documents or amending any content and using the same as evidence, all of which may cause damage to the college, university and others.
  - Purposely destroying the property of the university or of others, which may cause serious damage.
  - Conducting any other actions deemed as a serious breach of discipline.

- Any student who violates these regulations shall be subject to disciplinary action.
  - In the case of minor disciplinary infractions
    - Verbal warning and written record
    - Written warning and formal notification to the student
    - Written warning and formal notification to the guardian/ parents
    - Written warning to parents who are invited to sign the warning and acknowledge the student's breach of discipline.
  - In the case of serious disciplinary infractions
    - Disqualification from examinations
    - Suspending or delaying the approval of one's degree or diploma
    - Academic suspension
    - Dismissal
- Any cases not mentioned in these regulations will be submitted for consideration by the Academic committee.

## Disciplinary Procedures

- Disciplinary action against any student who has committed an offense cannot proceed without the university investigating the details of the case.
- If any student is accused with sufficient evidence, the Academic committee shall investigate and verify the matter unless the following scenarios have occurred :
  - The student has committed a criminal offense, which is the responsibility of the courts and legal system.
  - The student has committed a disciplinary offense and confessed as much in a written statement or a verbal statement to the Academic committee.





## Requests for Review of Decisions (Appeals)

- Any student who is punished under these regulations and disagrees with such punishment is entitled to an appeal according to the rules stipulated in these regulations. During the appeal period, the student remains liable for the punishment.
- The appellant must submit a written and signed appeal, which can be submitted personally; it is prohibited to assign another person to appeal on one's behalf.
- The student wishing to appeal is entitled to see the investigative report. However, the inclusion of witness statements may be withheld, depending on the discretion of the Head of the Committee.
- The Committee must consist of at least five persons and not more than seven.
- The Committee has the following powers and duties:
  - Consider and make judgments on all appeal matters.
  - Issue written orders summoning any person to give statements or deliver documents or materials to support any appeal.
  - Appoint members or groups of members to consider appeals or take action within the scope of the Committee's powers.
  - Other duties as assigned by the Program
- An appeal against any order for punishment shall be submitted to the Committee within 15 days from the acknowledged date of the punishment.
- The written appeal letter must be directly submitted to the Committee, which will make a judgment within 30 days from the date on which the appeal was received. An extension of time may be granted, provided it is recorded as evidence, and shall not exceed 60 days.
- If the Committee decides that the punishment order is appropriate to the offense or that the punishment is unsuitable and unfair, the Committee either dismiss the appeal or move for acquittal, whatever the case may be.
- Any such decision shall be regarded as final and the Committee shall transmit its written decision to the appellant.
- Regarding the period stipulated in these regulations, should any deadline fall on a national holiday, the following workday shall be counted as the last day of the prescribed period.
- The head of the committee is responsible for the implementation of these regulations. If there is any problem regarding compliance with these regulations, the head of the committee is empowered to finalize any orders.

# Facilities on Campus

## Guideline for on-campus Facility usage

Select spaces on campus have facility-specific policies that must be followed in addition to the guideline below. These spaces include but are not limited to the following: Space Inspirium, SCGI building and recreational center.

- No wedding or receptions will be held on campus.
- Do not rearrange the furniture yourself. Arrange with maintenance for set-up or first get permission from maintenance to rearrange the room.
- Smoking, alcohol usage or illegal drugs are not allowed on premises. Use of these items on premises will result in immediate dismissal from the facility.
- Shoes and shirts are required.
- No grilling without permission.
- Do not use scotch tape or masking tape to hang signs.
- Clean up after your meeting or event-leave the space equal to or better than you found it.
- Loud or abusive language is prohibited in the library and its premises.
- Rowdiness, harassment, or fighting will not be tolerated. Violators will be instructed to leave the premises.
- Abuse or vandalism of property will not be tolerated and violators will be prosecuted.
- Library users are urged to turn off cell phones and audible pagers upon entering the building. If it is necessary to use cell phones in the library, patrons are urged to keep the conversation short and quiet. Audio devices may be operated with headphones in the library, but must be inaudible to surrounding library users.
- The facilities are not responsible for personal items left unattended.
- Bicycles, tricycles, scooters, etc. should be parked at the bicycle rack and away from the entry doors.

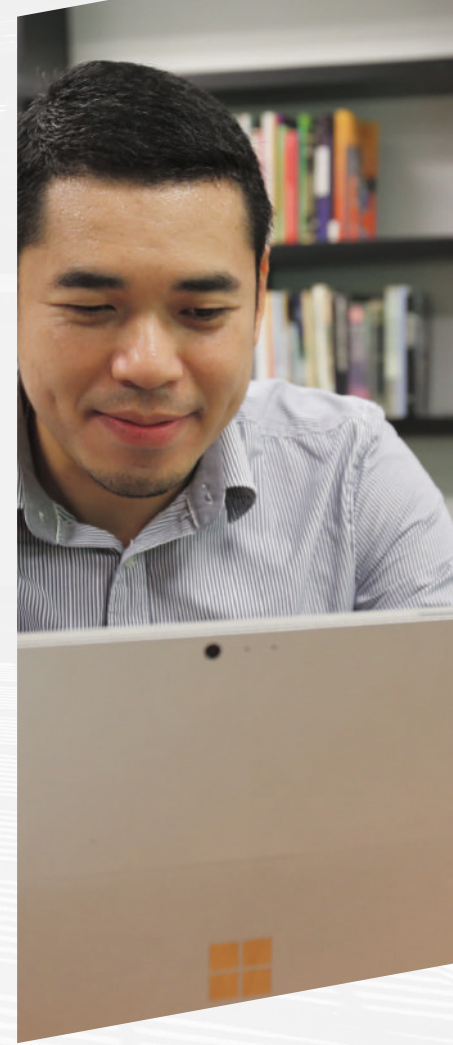






# CAMPUS LIFE

SIRINDHORN CENTER  
FOR GEO-INFORMATICS (SCGI)





## Space Krenovation Park

Thailand has benefited enormously over the past decades from space-related technologies. In order to enhance and utilize such technology in full strength, Geo-Informatics and Space Technology Development Agency (Public Organization) - GISTDA was established under the aegis of the Thai Ministry of Science and Technology. Thailand Earth Observation Satellite (THEOS) program was initiated in July 2004 with the aim of fulfilling Thai user's requirement and since then, GISTDA has deployed a "two-pronged grand strategy" with both value creation and social benefits in mind. The experiences gained and the partnerships developed have far more than paid back in full, the cost of development and operating the satellite. Today, GISTDA wishes to extend its current goal of being a data provider to "Delivering values from Space". In order to fulfill this vision, GISTDA is working closely with partners at the Space Krenovation Park to establish sustainable development in the space sector in Thailand.

GISTDA has established the Space Krenovation Park (SKP), a specialized science park, where creativity and innovation comes together in 2013. SKP aims to be a Thailand's innovative solutions to problems by utilizing Thailand's smartest people who will work together to provide ideas and solutions to important business, social, policy, scientific, and technical challenges especially in the area of Space technology and GIS. SKP shall built up a network of problem solvers, both internally and externally of GISTDA, proven challenge methodology, and cloud-based technology combine to help Thai industry transform their economics of innovation through rapid solution delivery and the development of sustainable open innovation programs. Its "strategic location" at the site of the current Ground Station in Sriracha close to the industrial area on the eastern seaboard of Thailand and elite universities in eastern Thailand will make it an invaluable asset.



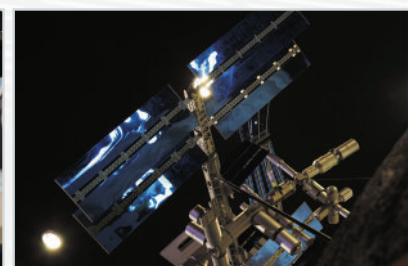


The SKP can provide several advantages by providing an open innovation platform, high demand of goods, strong domestic manufacturing base, cost advantages, well-educated talent pool, abundant low cost skilled workforce, and ability to leverage IT competitiveness. This aims to increase the level of competitiveness in both domestic and international level. Collaborating with global players such as Indian Space Research Organisation (ISRO), Japan Aerospace Exploration Agency (JAXA), and Swedish Space Cooperation (SSC), GISTDA plans to develop specific concepts for future mission that will enable and support SKP's work in advancing technologies.

Under the SKP and with a driving force of THEOS-1, the SKP's facility capacity will be based on cluster approach - with industry, academia and other institutions. Joint venture with the leading R&D institution will also give pace to these facilities. Testing facilities such as mechanical shaker and thermal vacuum chamber will also be part of the SKP. In the order to bring about social and economic benefits at SKP, GISTDA shall materialize innovation and also integrate industry and academia segments together and make the most of both their attributes. The cooperation between GISTDA and Wuhan University depicts an outstanding example of collaborative opportunities under the SKP framework and the framework extends to include joint appointments and internships providing increased access to graduate students, post-doctoral and future employees. SKP will open new frontiers in space related applications.

## SKP's infrastructure primarily consists of four zones.

- 1. Learning Zone :** Under this zone, we have the Sirindhorn Center for Geo-informatics and the Space Inspirium.





**2. Space Business and Entrepreneurial Zone :** Under this zone, we have the Visionarium and International business partner's offices.



**3. Operational Zone :** Under this zone, we have the satellite operations center



**4. Recreational Zone :** Under this zone, we have the accommodation for staff and students as well as a sports center.





# CAMPUS LIFE

## WUHAN UNIVERSITY



## Facilities in Wuhan University

Wuhan University boasts a campus there are large modernized teaching buildings, laboratory buildings, gymnasiums, sports grounds, swimming pools, archive buildings, and a specimen building with more than 200,000 pieces of valuable animal and plant specimens. The university's libraries have a collection of approximately 5.2 million volumes, subscribe to more than 10,000 kinds of Chinese and foreign periodicals. It now has two key State-level laboratories, three State-level discipline laboratories, two State-level research centers in engineering, six national research bases for humanities and social sciences, and seven national bases for fostering basic science personnel. Over twenty academic periodicals, Wuhan University Journal included, are published by the university, which has its own presses including an audiovisual material publishing house, colleges of foreign student's education and adult education, East Lake branch school, and three attached hospitals, which are all of first-class according to the official standard. For more information regarding the facilities in Wuhan University, you can visit their website <http://en.whu.edu.cn>, which will provide detailed information on location of various facilities.

# Campus Locations

The SCGI Master's Program holds classes at three locations



## SIRINDHORN CENTER FOR GEO-INFORMATICS

SCGI, Space Krenovation Park

Geo-Informatics & Space Technology  
Development Agency  
(Public Organization)

88 Moo. 9 Thung Sukala, Siracha,  
Chonburi Thailand 20230

Website: <http://scgi.gistda.or.th>

Tel. (+66) 033048091 Ext. 101

## BURAPHA UNIVERSITY

Faculty of Geo-informatics Burapha  
University, Chon Buri Campus.

169 Longhaad Bangsaen Road,  
Saensook, Mueang, Chonburi, Thailand  
20131

Website: <http://geo.buu.ac.th>

Tel. (+66) 038102328

Fax (+66) 038102379

## WUHAN UNIVERSITY

LIESMARS: State Key Lab of Information Engineering in Surveying and Mapping and Remote  
Sensing, Wuhan University

No.129 Luoyu Road, Wuhan, China 430079

Website: <http://www.lmars.whu.edu.cn/en/>

E-mail: [liemsars@whu.edu.cn](mailto:liemsars@whu.edu.cn) Tel/Fax: +86-(0)27-68778229



## Contact Person



**Ms. Petjaraj Techakriangkaikul**  
SCGI Coordinator

**SCGI Building**

Tel. : 098 251 8502

E-mail : petjaraj@gistda.or.th



**Ms. Minlada Rattanakul**  
Educator

**Burapha University**

Tel. : 0 3810 2328 : 101

E-mail : minlada@go.buu.ac.th



**Ms. Shi Lite**  
Internaional Affairs Office Diretor, LIESMARS

**Wuhan University**

Tel. : +86-27-68778229

E-mail : lilyshi@whu.edu.cn

# STUDENT GUIDE BOOK



SCGI.GISTDA.OR.TH



GISTDA

